



Patty's Barn Welcome Guide

MEET YOUR HOSTS



The Parry Family

Welcome! We're absolutely thrilled that you're here and we hope that you have a memorable stay with us at Patty's Barn.

Please take the time to review this welcome book. It's packed with information about Patty's Barn, the surrounding areas and our top picks for local recommendations.

Patty's Barn is very much a family business and we hope you'll feel this warm family vibe during your stay. We're 3rd generation farmers and are very connected to the land and the surrounding areas. We love our local area and take pride in everything we do, from conserving our natural environment, quality of service and cleanliness of our cottages.

We hope that you enjoy your stay with us at Patty's and if you need anything, please do let us know.

The Parry Family

if you need to get in touch



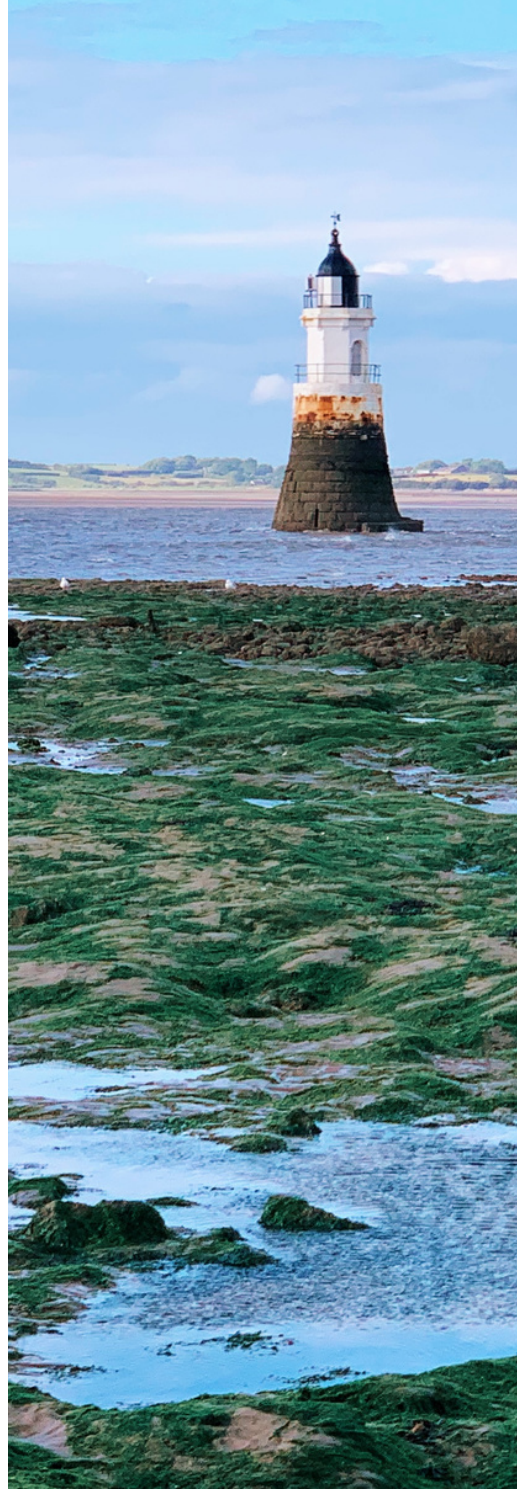
farm@pattysbarn.co.uk

(+44) 07812025940

@pattysbarn

www.pattysbarn.co.uk





To the Trough of Bowland



Wild Woodlands

to the
Hyde Coast



Patty's Woodland

The Out Barn, BBQ Area

Nature Trail Start

Native airfield, resin
access
Black Knights
Parachute Centre

Gym

Bins

Car park 2

Cobblestone Barn

to Cockerham
Sands

Higgeldy Piggeldy
Games Room

The Shed,
Events room

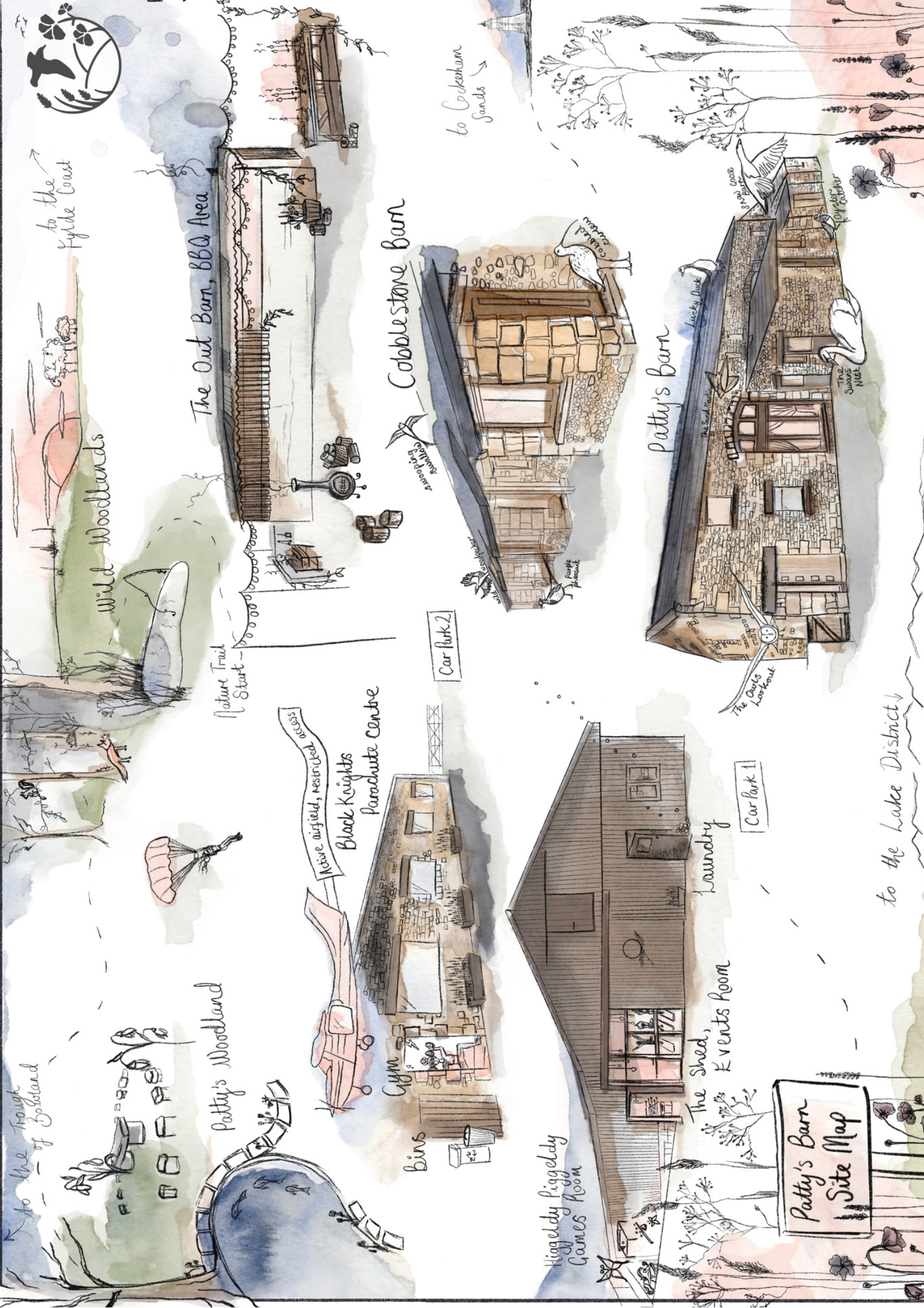
Laundry

Car park 1

Patty's barn

Patty's Barn
Site Map

to the Lake District







BUT FIRST,

WIFI



network:

PattysBarn

password:

Pattys2021

IN YOUR POCKET

This guide is also available to download as a pdf with clickable links.

If you'd like to save this document as a PDF to your device, just tap the print button above. It won't print right away, but will create a PDF which you can save to your device.



EMERGENCY INFO



LOCATION

Patty's Barn, Hillam Lane, Cockerham, Lancaster, LA2 0DY



EMERGENCY SERVICES

For emergency services (ambulance, police, fire) please immediately call 999. Do not delay if you feel an emergency situation has arisen. State your location as the address above.



IN CASE OF A FIRE

- Exit the property as quickly as possible and make your way to the fire assembly point in the car park
- Ensure that all persons are accounted for
- Dial 999 and ask for 'FIRE'
- State your location (see above)

Do not attempt to re-enter the building until a Fire Officer states that it is safe to do so.

CHECK IN & CHECK OUT

CHECK-IN

Check-in: 4:00 PM

Please let us know on arrival if you notice anything that is not right or is broken and we will get this fixed as soon as we can.

CHECK-OUT

Check-out: 10:00 AM

Please drop your keys back at Hillam Lane Farm in person or by posting them through the letter box at Hillam Lane Farm.



KEY INFORMATION

01 ACCESS CODE

The code to access the Laundry, Gym & Games Room is [C1305](#) - turn handle to the left.

02 KEYS

Please drop your keys back at [Hillam Lane Farm](#) in person or by posting them through the letter box at Hillam Lane Farm.

03 AIRFIELD

Patty's Barn is located next door to Black Knights Parachute Centre. [The site operates restricted access and you must not walk on the runway or parachute landing field at ANY time.](#)



COTTAGE RULES



01 NO SMOKING

We have a no smoking policy inside the cottages. If you smoke outside, please use the ashtrays from the cottages to dispose of your butts.

02 CONSIDERATION

Please be considerate of other residents. We kindly ask to keep things on the quieter side after 9pm.

03 WINDOWS

Please be sure to close all windows when leaving the cottages, particularly if you are in a cottage with velux windows. The Great British weather can change quite quickly.

APPLIANCES

OVEN

All ovens are gas and you'll find tin foil in the draws to line cooking trays. This is especially appreciated when cooking and grilling.

HEATING/COOLING

We set the heating on auto so it's warm for you in the evenings and mornings. You can control the temperature by the thermostat in the cottage. Fans can be provided on request

BBQ

There is a BBQ outside of your cottage and multiple other BBQs on site. You are responsible to clean the BBQ after use.

DISHWASHER

Washing tablets can be found beneath the sink.

LAUNDRY

The laundry room is located in the car park. Machines are coin operated and you'll need £2 per cycle.

CHILDREN

Travel cots and high chairs are available on request.

COTTAGE INVENTORY

Per person

- Bowls – Cereal, Soup and Dessert
- Plate – Large and Small
- Teacup and Saucer
- Mug
- Wine Glass
- Tumbler
- Egg Cup
- Fork – Table and Dessert
- Knife – Table and Side
- Spoons - Tea, Dessert and Soup

Kitchen equipment

- Water Jug
- Bread Chopping Board
- Baking Tray Tin
- Casserole Dish and Lid x 2
- Colander
- Condiment Set
- Frying Pans x 2
- Grater
- Ice Tray
- Iron and Ironing Board
- Automatic Kettle
- Measuring Jug
- Mixing Bowl
- Milk Jug
- Oven Roasting Dish
- Cake Tin
- Saucepans – Large/Medium/Small
- Sugar Basin
- Tea Pot
- Toaster and Toast Rack
- Tray
- Vegetable Dish x 2
- Rolling Pin

Kitchen Utensils

- Bread Knife
- Bottle Opener
- Carving Knife
- Corkscrew
- Cutlery Box
- Fish Slice
- Kitchen Scissors
- Ladle
- Potato Masher and Peeler
- Serving Spoons x 2
- Sieve
- Tin Opener
- Sharp Vegetable Knife
- Whisk
- Wooden Spoon

Other items

- Emergency Lighting
- Washing Up Bowl
- Brush and Sponge
- Washing Up Liquid
- Tea Towels with Rails
- Cleaning Agents
- Dish Cloths
- Clothes Maid
- Bucket
- Duster and Brush
- Door Mat
- Oven Cloth
- Mats
- Ashtray
- Vase

BINS & RECYCLING

Rubbish bins are located at the rear of the car park, on the right hand side of the laundry room. Recycling bins are located toward the back of the general waste.

- Put the right waste in the right bin
- Please ensure waste is clean and dry
- If waste is contaminated with food it cannot be recycled
- If you need extra bin bags please let us know

RECYCLING Clean items ONLY

PAPER



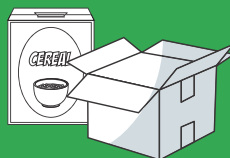
PLASTIC BOTTLES, POTS,
TUBS & TRAYS



FOOD TINS & DRINK
CANS



CARDBOARD



GLASS



GENERAL WASTE

Everything else goes in the
general waste red bin



REDUCE | REUSE | RECYCLE

Do your bit! 😊

GETTING AROUND



TAXI

A to B – 01524 60000
A1 Taxi's – 01524 35666
848848 Taxis – 01524 848 848



AIRPORT

Airport Services – 01524 751 629
Peter Cookson – 07976 713656



BUS

Bus No. 89 to Lancaster – catch at the top of Hillam Lane. Up to date times available online



BIKES

If you've brought your bike, check out the extensive cycle network in the area



PARKING

Onsite parking is free at Patty's Barn

ONSITE FACILITIES



GAMES ROOM



Pool Table



Table Tennis Table



Air Hockey Table



Books & Games



THE OUT BARN, BBQ AREA



BBQ area



Alfresco dining, large table dining



Picnic benches



Fireplace & firepit



OUTDOORS AT PATTY'S BARN



x3 Woodlands



6 Ponds



Stone Circle



Nature Trail



Fishing



Picnic Areas



Football



Tug of War Training



Coastal Walking



Firepits & marshmallows



Wood fired hot tub hire



THE SHED, EVENTS ROOM

Find out what's happening during your stay, or hire our events room for your own private party or celebration.

We work with various chefs and activity providers to create one of a kind experiences.



Immersive dining experiences



Retreats



Wellness experiences



Private hire

Visit www.the-rewilding.com for more information & bookings



WOOD FIRED HOT TUB AND COLD WATER PLUNGER

- Please note the hot tub is not included in the cost of your accommodation.
- The hot tub needs to be pre booked which can be done so via the website or by making an enquiry during your stay. Please call Michelle on 07502726596
- Please give us as much notice as possible as it takes a few hours to heat up.



HIRE COSTS

DAY HIRE

- Includes filling up the tub with water
- Firewood & firelighters

£30 per day

SERVICED DAY HIRE

- The hot tub will be filled and heated ready for you to use
- Additional firewood & firelighters

£50 per day

Visit www.pattysbarn.co.uk to make a booking or call Michelle on 07502726596



GYM



Rowing Machine



Bike



Weights



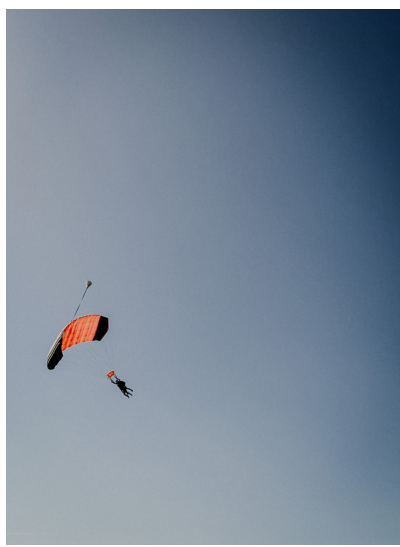
BLACK KNIGHTS SKYDIVE



On-site you'll find Black Knights Parachute Centre, the longest running skydive centre in the country. Courses range from a 1 jump taster right through to your first solo free fall jump. Create a holiday you'll never forget and do something amazing.

Fall from 7000, 11000 or 15000 feet tandem skydives, the UK's highest skydive

Visit www.bkpc.co.uk for more info





THE REWILDING AT PATTY'S BARN

Experiences, retreats & events inspired by nature & human connection

The Rewilding is about a holistic approach to living. Decluttering the mind, undoing human domestication and living a more raw and curious life.

FIND OUT WHAT YOU COULD GET INVOLVED IN
DURING YOUR STAY AT PATTY'S BARN

WORKSHOPS & EVENTS

FARM TO TABLE IMMERSIVE DINING EXPERIENCES

RETREATS

HIRE OUR VENUE

EXPLORE OUR ONLINE SHOP

WHAT'S ON



GET IN TOUCH

hello@the-rewilding.com

www.the-rewilding.com

TAG | FOLLOW | SHARE



@THEREWILDINGCOMMUNITY



ALL OF OUR COTTAGES



THE SWOOPING SWALLOW

Sleeps up to 6
4 beds
1 double ensuite
1 double bed (shared bathroom)
x 1 twin room (shared bathroom)



THE SAND MARTIN

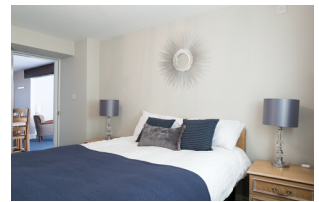
Sleeps up to 5
4 beds
shared bathroom
1 double en suite
1 twin room
1 single



THE SWANS NEST

Sleeps up to 2
1 bed or 2 singles

1 super king
1 bathroom



THE OYSTER CATCHER

Sleeps up to 4
3 beds
shared bathroom
1 double
1 twin room



THE WILD WOODPECKER

Sleeps up to 7
5 beds
1 double ensuite with 1 single bed in the same room
1 double bed (shared bathroom)
x 1 twin room (shared bathroom)



THE LUCKY DUCK

Sleeps up to 8
7 beds

1 double bed, shared bathroom
1 single, shared bathroom
x 2 twin room, en suite bathrooms
1 single, en suite bathroom



THE PURPLE PHEASANT

Sleeps up to 7
5 beds

1 double ensuite with 1 single bed in the same room
1 double bed (shared bathroom)
x 1 twin room (shared bathroom)



THE COBBLED CURLEW

Sleeps up to 7
5 beds

1 double ensuite with 1 single bed in the same room
1 double bed (shared bathroom)
x 1 twin room (shared bathroom)



SNOW GOOSE BARN

Sleeps up to 4
3 beds
shared bathroom
1 double
1 twin room



THE OWL'S LOOKOUT

Sleeps up to 4
3 beds
shared bathroom
1 double
1 twin room



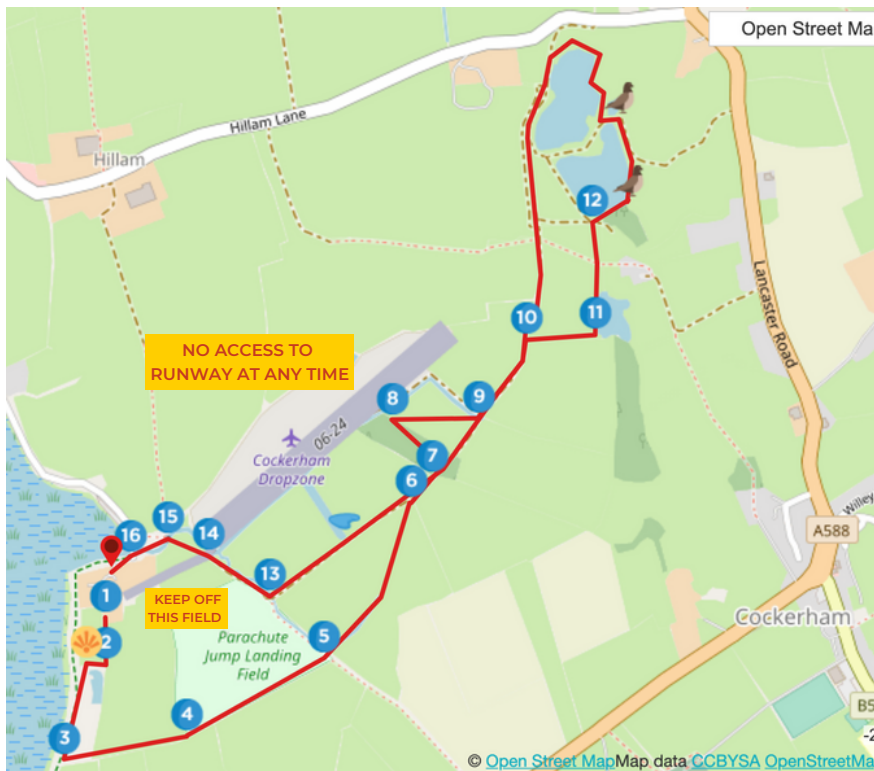
EXPLORE PATTY'S BARN SEASONAL NATURE TRAIL

There is much to explore at Patty's Barn, our nature trail covers 2.5 miles across various habitats, from woodlands, ponds, grazing pastures, a wildflower meadow, well established and newly planted hedgerows to finding your way back to the salt marshes of Morecambe Bay.

In partnership with Lancashire Wildlife Trust we have mapped out a seasonal nature trail to guide you round our site and point out wildlife and nature you may expect to see throughout the seasons.

Take some time to enjoy the seating areas in Patty's Woodland, why not take your book or pack up a family picnic for our woodland table.

Please use the printouts in your cottages to reference the, or visit our website to find the downloads to help you identify some of the plants and animals to look out for.



PLEASE HELP US KEEP OUR TRAIL SAFE BY FOLLOWING THESE STEPS:

1. Always follow the route outlined on the map following the green and pink arrows along the route.
2. Keep off the airfield and parachute landing field at ALL times.
3. No dogs.
4. Leave no trace of your visit, take all your litter home.
5. Leave gates and property as you find them.
6. We are a working farm so please respect the Countryside Code & any livestock.

[DOWNLOAD MAP](#)

Keep a Look Out For



IN PARTNERSHIP WITH

Text by John Lamb, Senior Conservation Officer for Lancashire Wildlife Trust with contributions from Seumus Eaves, local ornithologist, and Michelle Parry, The Rewilding.



Lancashire
Manchester
North Merseyside

SCAN ME FOR
INTERACTIVE MAP







ENVIRONMENTAL POLICY

We believe in making travel as low impact as possible and are committed to operating our cottages with responsible and environmentally friendly practices where possible.

We factor the environment into our everyday decisions from using less chemicals in our cleaning products, using local suppliers for our guest products, recycling, as well as operating a 'switch off' policy when powered appliances are not in use.

As farmers, we work a lot on the land and are very grateful to be located across a site where we can actively develop and improve the natural environment. We do this in many ways by planting trees and hedgerows, rewilding and encouraging our guests to get outside and enjoy nature. We have worked hard to make a space where our guests can explore and enjoy nature and, are constantly learning and striving to become more socially and environmentally responsible on this journey.



We're proud to be members of the Green Tourism Network who offer expert advice and an Independent certification process that's respected by globally, ensuring we take a proactive approach to sustainability



Our farm is members of LEAF (Linking Environment And Farming) the leading organisation working with farmers to deliver more sustainable food and farming.

OUR JOURNEY TO BECOMING MORE SUSTAINABLE INVOLVES...

REWILDING



BIODIVERSITY PLAN



WASTE MANAGEMENT



BUILDING & MATERIALS



SUPPLIERS



OUR FAMILY FARM

Did you know that we're also dairy farmers at Patty's Barn. We have a herd of holstein cows that produce milk that goes into our food chain to make all kinds of dairy products. We believe that we all play a role in how we show up for the environment, every choice we make has an environmental impact, as farmers we understand that we play a big role in this too, but we also have the opportunity to be part of the solution, to bring innovation into practices that create nature friendly farming whereby both nature can thrive and we can continue to produce high quality food for our nation.

REWILDING AT PATTY'S BARN

We have dedicated a 3 acre plot of land that will be left to rewild, we believe that a managed approach to rewilding is more responsible and impactful for the environment. In this plot we've planted over 300 saplings to create a tree/hedgerow which will create a more connected wildlife corridor between 2 woodlands and water bodies. This additional shrub will provide habitat for small mammals and wildlife and encourage new and existing wildlife to thrive.

Check out our sister business The Rewilding (www.the-rewilding.com) located onsite at Patty's Barn that delivers a range of experiences focussed on human and nature connection to rewild the human.

RENEWABLE ENERGY

In another area of our family farm we produce renewable energy through solar and the process of anaerobic digestion. This involves processing agricultural waste from our farm and neighbouring farms to collect the methane gas which is produced which is then converted into electricity for heating and power that goes back into the National Grid. We currently provide an average of 600K of energy which equates to the supply of approximately 600 houses. The process is circular with the excess waste from this process being reused as an organic fertiliser to grow grass for our cows. Heat is also a by-product in this process in which we power our farm and dry logs.

HOW YOU CAN HELP US?

SWITCH IT OFF

Save energy and turn off the heating, electrical equipment (lights, television, cooker etc) when not in use.

COASTAL LITTER PICKING

Living on the coast means we get a lot of wash up from the sea. Help us keep our coastline clean and take a big bag out on your walks. We have proper litter picking equipment available on request.

RECYCLE

Recycling reduces the need for extracting (mining, quarrying and logging), refining and processing raw materials all of which create substantial air and water pollution. Please make use of our recycling bins on site.

EXPLORE OUR NATURE TRAIL

The more time we spend outdoors the more connected we become to the natural world and the more likely you are to adopt environmentally friendly ways.



LOCAL KNOWLEDGE



MORECAMBE BAY

- Morecambe Bay is one of the most important places for birds in Europe and so is designated a Special Protection Area (SPA) and a Site of Special Scientific Interest (SSSI), and has the maximum level of legal protection for its wildlife.
- It's salt-marshes, sands and mudflats are designated as internationally important. It's one of the top three places in the UK for overwintering birds.
- Mud might not sound particularly appetising to us, but it draws in quarter of a million birds a year. Morecambe Bay mud is a canteen packed full of cockles and shrimps and lugworms, mussels and more that attracts the likes of; curlews, dunlins, black-tailed godwits, redshanks, swirling flocks of knot, and oystercatchers in abundance feed on the estuary.
- Many of the birds here have flown thousands of miles from their breeding grounds in the Arctic to spend the autumn and winter months here. Others use the site as a service station to refuel on their migration north or south. While some birds spend the spring and summer months here and use the saltmarsh to raise their families.
- The over-wintering birds come to feed or to 'roost' (rest and conserve energy). Winter is a particularly stressful time for these birds, some of which may have lost half of their body weight during migration. They need to be able to rest and feed on the marshes and mudflats undisturbed, to regain condition and put on enough weight to survive the winter and make the migration back to their breeding grounds in the spring.
- It is the largest expanse of intertidal mudflats and sand in the United Kingdom, covering a total area of 310 km² (120 sq mi)

AREA GUIDE



NOT TO BE MISSED



01

WALLING'S ICE CREAM

A couple of miles up the road you'll find the best ice cream in Lancashire! Go for a double scoop, I dare you!

02

COCKERSANDS ABBEY & PLOVER SCAR LIGHTHOUSE

Walk along the coast from the doorstep and enjoy the expansive views out to sea, best timed with the sunset or the tides.

03

FARM YARD BREW & CO

Get down to Farm Yard Brew to enjoy their tap room. Visit on the weekend for live music and street food vendors.

04

NICKY NOOK & THE APPLESTORE CAFE

Our favourite local walk (5km loop) with views across the bay, finished with a stop at the Applestore Cafe and exploration around the artisan shops on site at Wyresdale Park.

05

WILLIAMSON PARK

Explore the park, and climb to the top of the monument to get epic views, visit the butterfly house and search online for any outdoor events taking place. Any treasure hunters should visit GB Antiques whilst your in this part of town.

TOURIST INFORMATION

LANCASTER VISITOR CENTRE

www.visitlancaster.org.uk

The Storey, Meeting House Ln, Lancaster LA1 1TH,
01524 582 394

VISIT GARSTANG

www.discoverwyre.co.uk

1, Cherestanc Square, Rope Walk, Garstang, Preston
PR3 1EF, 01253 891 000

MORECAMBE VISITOR CENTRE

www.exploremorecambabay.org.uk

The Platform, Marine Road, Morecambe, LA4 4DB
01524 582808

EXPLORE BOWLAND

www.explorebowland.co.uk

Dedicated to the Forest of Bowland. Explore this beautiful area with a comprehensive list of walks and things to do.

VISIT LANCASHIRE

www.visitlancashire.com

An excellent resource for what's happening in the area, recommendation on local attractions, walking routes and much more.



VILLAGES, TOWNS & CITIES

There are lots of villages, towns and cities to explore within a one hour drive of Patty's Barn, these are our favourites.

COCKERHAM

Patty's Barn is located in the village of Cockerham, close to the beach and rolling countryside.

LANCASTER

Lancaster is 10 minute drive, our closest city and famous for its history and culture.

GARSTANG

Garstang is a small market town and the worlds first ever Fairtrade Town, just 10 minutes from Patty's Barn.

MORECAMBE

Walk along the promenade and soak up some of the UKs best views looking out toward The Lake District

KIRKBY LONSDALE

A historic market town well worth the visit with small shops, cafes and riverside views

SCORTON

A quaint village with 3 excellent garden centre cafes and quick access to the Nikki Nook walk

BLACKPOOL

Known as the Vegas of the North, adventure Blackpool Pleasure Beach and eat a chippy tea on the prom.

GLASSON DOCK

A few miles down the road, walk around the marina and check out The Smoke House

HEYSHAM

Visit the old village, head to half moon bay and research the local history

CARNFORTH

Famous for being the train station featured in A Brief Encounter, Carnforth is full of charm.



BILLY BOB'S

Outdoor hamburger and ice cream parlour with adventurous outdoor and undercover play.

GIGGLES PLAY

Indoor play adventure from 0-12 years, ball pools, tunnels you name it!

GREENLANDS FARM

Open farm where you can pat & feed farm animals, race around the barn on the go-carts and picnic by the paddocks. There is also an artisanal village and cheese & wine selection for the adults to enjoy.

JUMP RUSH

An indoor trampoline park, with over 150 trampolines in the heart of Morecambe

BROCKHOLES

Head toward The Lakes, Brockholes Visitor Centre has an adventure playground, soft play and extensive gardens to explore.

FOR KIDS



WILDBOAR PARK

Ramble around the beautiful wooded park where you can hand feed animals such a deer, llamas and goats as well as enjoy the tractor play area.

HAPPY MOUNT PARK

A free & fun children's attraction to suit all ages. Including crazy golf, splash park, sand park, train rides and trampolines.

BEATRIX POTTER WORLD

BEATRIX POTTER WORLD

Step into the Peter Rabbit garden and meet all his friends in this magical day out for all the family.

SOUL BOWL

If you love food, drink and bowling, this is a great spot to head to in Morecambe, upstairs from the iconic arcades and a perfect stop off after a stroll along the promenade

THE FLOWER BOWL

Crazy golf, bowling, cinema, arcades this is an impressive multi entertainment destination. Pop into Barton Grange garden centre across the road.

FOR KIDS



GET OUTSIDE



Get outside and explore the countryside around you. Enjoy the ever changing tidal landscape from your doorstep, watch the sun come down over the horizon, take in the sea breeze on a coastal walk, or go inland amongst the rolling hills. Explore the long and winding canal networks and make the most of being in the north with a day trip to The Lake District , Forest of Bowland, or Yorkshire Dales. There is so much to explore in the northern great outdoors.

PARKS & NATURE

WILLIAMSON PARK

[Quernmore Rd, Lancaster LA1 1UX](#)

Home to the iconic Ashton Memorial and 54 acres of park and woodland, with spectacular views across Morecambe Bay to the Lake District fells.

HAPPY MOUNT PARK

[Marine Rd E, Morecambe LA4 6AQ](#)

A family-friendly park including, splash park, play area, bowling green, adventure golf & 18-hole putting green, and ornamental gardens to enjoy the peace and tranquillity of the park.

SCOTCH QUARRY

[79 Clarence St, Lancaster LA1 3BB](#)

An urban farm and secret sanctuary in the city, outdoor play area and community wildlife garden

FAIRFIELD NATURE RESERVE

[Knowsley Cl, Lancaster LA1 5UG](#)

Fauna is a 16-acre local nature reserve, with various habitats from meadows to wetlands.

BROCKHOLES NATURE RESERVE

[Preston New Rd, Samesbury, Preston PR5 0AG](#)

Wetland and woodland nature reserve, home to rare bird species, with a floating visitor village.

LEIGHTON MOSS

[Storrs Ln, Silverdale, Carnforth LA5 0SW](#)

Bird habitat with trails/hides in large reedbed, plus visitor centre, tearoom and kids' activities.

EXPLORE THE COAST



COCKERSANDS

On the doorstep from Patty's Barn, head toward our local landmarks of the ancient ruins of Cockersands Abbey and Plover Scar Lighthouse

FLUKE HALL SANDS

A beautiful and bike-friendly coastline adventure to catch sunsets and panoramic views of Morecambe Bay.

MORECAMBE BAY

One of the most important wildlife refuges in the UK. A great place to grab some fish and chips and have an ice cream on the the beach

KNOTT END TO FLEETWOOD FERRY

Enjoy a brew and a bite to eat in a cafe, a stroll on the seafront, visit the Lowry statue before sailing back to Fleetwood.

HEYSHAM NATURE RESERVE

A paradise of orchids, warblers and moth



NICKY NOOK

Distance: 3 miles Time: 1.5 - 2 hours

Higher Lane, Scorton, PR3 1BB

You can't go wrong with a countryside walk up Nikki Nook and it would be difficult to get lost on the well marked tracks. Don't forget to drop into the Apple Store Cafe for tea and cake after.

COCKERHAM CIRCUIT

Distance: 6.5 miles Time: 3-4 hours

This is an easy trail that loops right around Cockerham and you can start it right from your doorstep.

CLOUGHA PIKE

Distance: 7 miles Time: 3 ½ -4 hours

Little Cragg Car Park, LA2 9ET, 12 miles, 29 minutes

This is a local favourite and the views from the top are spectacular, you can see Lancaster and the Lune Valley, Lakeland Fells, Yorkshire Dales, Morecambe Bay, Blackpool and the Fylde.



COCKERSANDS

Glasson Dock to Cockersands Abbey

Distance: 4.9 miles Time: 1½ - 2 hours

A beautiful walk that will take you around the coastline and past the historical ruins of Cockersands Abbey, founded before 1184. We recommend Cafe D'Lune to pick up a hot drink and snack.

BROCK BOTTOMS

Brock Hill Lane, Cloughton, Preston, PR30, 40.5 miles, 46 minutes

A popular hot spot for families and dog walkers. There's a stream for children to play in and a refreshing dip for dogs to quench their thirst.

BEACON FELL

Beacon Fell, Carwags Ln, Preston PR3 2ES, UK, 16 miles, 36 minutes

For unmissable views of Lancashire and beyond make the most of the many tracks and trails available in the 185-acre site. You won't be disappointed.



CONDER GREEN

Conder Green to Lancaster Estuary

Distance: 8 miles Time: 4 hours

A wonderful stroll or cycle along the disused railway track that once linked Lancaster. You'll have coastal views and canal paths. This is a great spot for bird watching and sunsets. Hot tip, stop off and try the craft beers at The Waterwitch on the canal side,

JENNY BROWN'S POINT

Silverdale to Jenny Brown's Point

Various walking circuits to suit your distance in this area

From the shining sands of Morecambe Bay, stunning scenery and amazing wildlife, the area is simply awe-inspiring - full of natural spectacles and a surprise around every corner.

CROOK O LUNE

Distance: 2.7 miles Time: 4 hours

This dramatic stretch of the river offers wonderful views of the Lune Valley, whilst being a leisurely and relaxing route.

ARTS & ENTERTAINMENT

THE DUKES

The Dukes theatre and cinema has live, screen and outdoor productions, something for everyone.

THE GRAND

The Grand Theatre, is the third oldest theatre in Britain and operates as one of the key north west venues for amateur drama, music and dance and professional touring companies.

THE PLATFORM

The Platform is a unique live entertainment venue situated in a restored Edwardian railway station with live music, comedy, theatre, children's shows, community events and venue hire.

WILLIAMSON PARK

From music festivals, outdoor theatre, dance performances and much more there is always something going on in the park

MORE MUSIC

More Music is a music and education charity delivering workshops, training, performances and festivals across the district

THE STOREY

Check out what exhibitions and events are happening during your stay. Lancaster visitor information is also located in this building.

MUSEUMS & CULTURE

LANCASTER CASTLE

England's dark history, with tales of persecution, incarceration, punishment and execution, has been lived out over the centuries within the confines of Lancaster Castle. Book a tour or check out one of the frequent cultural events that take place at the castle

PRIORY CATHEDRAL

Next door to the castle The Priory Church is a stunning building which often hosts concerts and recitals

ASHTON MEMORIAL

The most iconic and beautiful building in Lancaster, set in Williamson Park and built by Lord Ashton as a tribute to his late wife Jessy. Well worth a visit to explore the park and take in the views across the Bay and Lakeland fells.

BUTTERFLY HOUSE

Also set in Williamson Park and opposite Ashton Memorial, check out the butterfly house, an Edwardian palm house, now home to hundreds of exotic butterflies and birds

MARITIME MUSEUM

Discover all about Lancaster and Morecambe's relationship with the ocean, about the challenging lives of those living and working in the places between land and sea, and how our inland waterways have shaped our lives, work, and leisure.

LANCASTER MUSEUM

Discover more about Lancaster's past from the Romans to the present day with regularly changing exhibitions, events and activities.

LEISURE CENTRES

LANCASTER UNIVERSITY SPORTS CENTRE

Bigforth Drive, Bailrigg, Lancaster LA1 4YW
01524 594000

25m swimming pool and indoor climbing wall,
badminton, squash courts and gym.

SALT AYRE

Doris Henderson Way, Morecambe, LA1 5JS
01524 847540

With a 33 metre pool with moveable floors and
boom enabling varying pool depths, relaxing spa
pool and fun waterslide for the kids

YMCA GARSTANG

State-of-the-art Gym including Free Weights;
Fitness and Relaxation Classes; Swimming Centre
Windsor Rd, Garstang, PR3 1ED
01995 605410



GOLF

LANCASTER GOLF CLUB

Ashton Hall, Ashton-with-Stodday, Lancaster
LA2 0AJ, 4.2 miles, 9 minutes
01524 751 247

ASHTON GOLF CENTRE

Ashton Golf Centre, A588, Lancaster LA2 0AJ,
4.2 miles, 10 minutes
01524 752 221

GARSTANG GOLF CLUB

Bowgreave Drive, Preston PR3 1YE
7.4 miles miles, 15 minutes
01995 600100



SURROUNDING LANCASHIRE



01 LAKE DISTRICT

The Lake District is one of the most iconic areas in the UK and was recognised in 2017 as a UNESCO World Heritage Site

02 FOREST OF BOWLAND

The home of Tolkein and the infamous Pendle Witch Trials, as well as recognised as one of Englands, Areas of Outstanding Natural Beauty (AONB)

03 YORKSHIRE DALES

One of the UKs most outstanding national parks includes some of the finest limestone scenery in the UK, from crags and pavements to an underground labyrinth of caves

MORE INFO

The following website are full of resources, event calendars, current attractions and local knowledge

[VISIT LANCASTER](#) | visitor information, local info & events

[VISIT LANCASHIRE](#), Places to visit, what's on guide, walks, food & drink recommendations across Lancashire

[EXPLORE MORECAMBE BAY](#) The official Morecambe Bay tourism information website. Find the best places to stay, things to do and what's going on around Morecambe Bay

[BAY TOURISM](#) | Information to explore the bay's history, cycle routes, walking and activities.

[EXPLORE BOWLAND](#) | A website dedicated to the Forest of Bowland. Explore this beautiful area with a comprehensive list of walks and things to do.

[ECO ESCAPES](#) | Eco Escapes itineraries to help visitors make the most of their time in Lancashire's outstanding natural landscapes.

[LANCASHIRE WALKS](#) | An extensive guide for local walks and maps across Lancashire

[BOWLAND WALKS](#) | For walks and routes in The Forest of Bowland (AONB)

[THE BAY CYCLEWAY](#) | Find cycle routes to some of the most beautiful stretches of coastline in the uk

[MORECAMBE BAY PARTNERSHIP](#) Connection people with nature across the Bay.



DINING GUIDE



LOCAL PUBS

MANOR INN

This is the closest watering hole and within walking distance, a great family friendly pub.

THE MILL

Located on the canal towpath, you'll find locally sourced food and hand pull ales from the Lancaster Brewery with an excellent beer garden.

THE STORK

Great affordable pub grub and perfectly located for the coast to coast cycle way.

PATTERN ARMS

A busy pub with a warm and welcoming atmosphere serving traditional and affordable hearty meals.

FARM YARD BREW & CO

Locally produced craft ales with an excellent tap room and live music on the weekends, this is a must visit for any beer lovers.

THE DALTON ARMS

Serving real ales and locally sourced produce, you can't go wrong with this local pub

RESTAURANTS

THE CARTFORD INN

The Cartford is at the top of our list. With a seasonal menu of local produce, warm friendly staff and an open fire, you really can't go wrong. We recommend the very indulgent french onion soup to start!

QUITE SIMPLY FRENCH

This is a favourite city spot with delicious food and a welcoming atmosphere. Once you've indulged in exquisite cuisine and an excellent wine list pop next door for a nightcap at The Wagon & Horses pub. Check out the Simply French website for the latest offers.

THE FLEECE INN

Local food and local beer, a warm friendly pub. Drop-in for a quick bite after a country walk or indulge in their traditional evening menu.

INN AT WHITEWELL

A little bit of a drive, however, you won't be disappointed with the journey through the stunning landscapes of the Forest of Bowland. This breathtaking rural area is a well-kept secret and the food lives up to the hype. We also recommend dropping into Holmes Mill, a former textile mill boasting Bowland Brewery.

RESTAURANTS

BAY HORSE

A warm and cozy spot nestled on the outskirts of The Forest of Bowland. You'll find local produce, good beer, and an excellent roast!

QUARTERHOUSE

By day, an excellent brunch menu and in the evenings, you will find a take on modern British cuisine in the form of small plates. Each dish celebrates one or more elements of the north-west's culinary heritage

SECRET BISTRO

Proper northern, fine dining without the pomp and faff, you'll find modern British, European fusion, set amongst quirky interior and an eclectic soundtrack.

PIPERS

Pipers Restaurant, situated on the picturesque High Street in Garstang, serves high quality modern British cuisine, with an emphasis on the best of locally sourced produce. Set in a charming 18th-century building it is owned by award-winning chef Ian Piper and his wife Shelley

GASTRO PUBS

THE BOROUGH

This warm cozy pub has got it all you'll find good beer, excellent food and live entertainment. It's also host to a Sunday night comedy club.

THE SUN

This is a local hot spot for good beers, good wine, excellent cheese boards and friendly staff, a true gastropub with a homely atmosphere.

THE WATER WITCH

This is a summer hot spot hangout, known for its vast selection of cask ales and outdoor canal-side drinking. Great stop for a towpath stroll.

GUY'S HAMLET

A canal side haven of thatched roof buildings, you'll find a selection of pubs and restaurants on site. We recommend spending the day and taking a stroll down the canal towpath.

JOHN O'GAUNT

Right in the centre of Lancaster, If you're looking for excellent local live music to get down to, head over to the John O'Gaunt to get your fix!

WAGON & HORSES

A modern English pub with an excellent Sunday lunch, craft ales and located on Lancaster Quay

CAFES & BRUNCH

THE BARN

If you're looking for afternoon tea with the best scones around you won't be disappointed. The Barn also boasts an Aladin's cave gift shop, specialist garden centre and restaurant serving homemade light lunches. Full of character and a top recommendation whilst in the area.

APPLESTORE

Located on the magical Wyresdale Park Estate, the cafe is inside a glasshouse, with boutique shops onsite, a visit here is best paired with a walk up Nikky Nook.

WALLING'S ICE CREAM

Bringing in crowds from across Lancashire & Fylde for the sweet taste of Walling's Ice Cream. There's picnic benches and a cafe inside if you fancy a cuppa. We recommend the Blackcurrant Cheesecake and Toffee Crunch.

ATKINSON'S, PRIORY HALL

If you're wondering where your next best coffee is coming from, it's here! Our 'go to' place for excellent coffee, cake and service! You'll also find a late licence and live music on Friday nights, check their Facebook page for what's coming up. Don't forget to pop next door to Atkinson's roasters.

CAFES & BRUNCH

THE HERBARIUM

Lancaster's best plant based cafe but not just for vegans, the menu has lots of excellent brunch and lunch options with a wide selection of artisan teas and drinks to enjoy.

MUSIC HALL

Sister cafe to Atkinson's Priory Hall you won't be let down by the coffee. Set in a quaint square just off the main shopping street with yummy pastries not to miss!

DAISY CLOUGH

A garden centre cafe and shop with delicious food and coffees and excellent service.

JOURNEY SOCIAL

One of the most popular spots in town for espresso, creative brunch meals & pastries.

TAKEAWAYS

CHINESE

Golden Dragon - 01524 33100, 11 George St, Lancaster LA1 1XQ, UK
Fortune Star - 01524 842 828, 16 Dalton Square, Lancaster LA1 1PL, UK

THAI

Thai at Pilling - 01253 790333, Lancaster Rd, PR3 6AH
Blue Moon - 01524 381111, 6 Rosemary Ln, Lancaster LA1 1NR, UK
Siam Balcony - 01524 383889, 6 Chapel St, Lancaster LA1 1NZ, UK

INDIAN

Sultan - 01524 61188, Brock St, Lancaster LA1 1UU, UK
Bombay Balti - 01524 844550, 16 China St, Lancaster LA1 1EX, UK

ITALIAN

Aquila Woodfired Pizza - [015242 97289](tel:01524297289), 80 Penny St, Lancaster LA1 1XN
Pepe Rossa - 01524 840 830, 128 Greaves Rd, Lancaster LA1 4UW,
Pizza Margherita - 01524 36333, 2 Moor Ln, Lancaster LA1 1QD

FISH & CHIPS

Hodgsons Chippy - 01525 67763, 96 Prospect St, Lancaster LA1 3BH
Neptune Fish & Chips, 01524 846808, 18 Scotforth Rd, Lancaster LA1 4ST

GO BURRITO

01524 874775 - 6 Lower Church Street, Lancaster LA1 1NP

BARs

RECCOMENDATIONS

TIPPLE COCKTAIL

61 King St, Lancaster LA1 1RE

HOGARTS GIN

The Varsity 9, George St, Lancaster LA1 1XQ

STUDY ROOMS

30-32 Church St, Lancaster LA1 1LH

CAPPUVINO BAR

60 Church St, Lancaster LA1 1LH

MINT COCKTAILS

34 Church St, Lancaster LA1 1LH



FOOD & DRINK TOURS



BOWLAND & BAY

ARTISAN FOODIE ADVENTURES

Bowland & Bay takes travellers to a select group of the finest artisans in the region. Created for food lovers, this is a totally unique experience and can be made bespoke for every group.

Each tour lasts between 4 and 7 hours and Katie, your guide will drive you between locations in her luxury Mercedes Tourer.

You can expect to visit award winning micro-brewers, gin distilleries, inns and much more and Katie is full of information about all of the artisans and local legends of Lancashire. a really great day out!

To book and for more information, visit www.bowlandandbay.co.uk or get in touch with Katie 07476 001539, hello@bowlandandbay.co.uk

NECESSITIES & CONVINIENCE



SUPERMARKETS IN LANCASTER

BOOTH'S

Hala Rd, Lancaster LA1 4SG, 6.2 miles, 14 mins
The Waitrose of the north (but much better).
Bustling with UK & local produce

COUNTRYSTYLE MEATS FARM SHOP

Address Leisure Park, Lancaster Leisure Park, Lancaster
LA1 3LA, 7.5 miles, 18 mins
Traditional butchery and greengrocery

SINGLE STEP CO-OP LTD

78A Penny St, Lancaster LA1 1XN, 7.5 miles, 21 mins
Small organic, eco-friendly produce from local farmers
and suppliers.

SAINSBURY'S

Cable St, Lancaster LA1 1HH
7.5 miles, 20 mins

ALDI

Lancaster, Aldcliffe Road, LA1 1AZ
7miles, 15 mins

SUPERMARKETS IN GARSTANG

BOOTH'S

Cherestanc Square, Park Hill Rd, Garstang, Preston PR3
1EF, 7.7 miles, 17 mins

BRADSHAW'S FARM SHOP

Prospect Farm, Garstang By Pass Rd, Preston PR3
0LP, 7.3 miles, 16 mins
Fresh fruit and veg shop

BARTON GRANGE FARM SHOP

Garstang Rd, Brock, Preston PR3 0BT, 9.3 miles, 17 mins
Bustling full of local suppliers, family butchers, fresh fruit
and veg and a gigantic garden centre and gift shop to
explore

SAINSBURY'S

Park Hill Rd, Garstang, Preston PR3 1EL
7.8 miles, 18 mins

ALDI

Moss Ln, Garstang, Preston PR3 1HB
7.6 miles, 17 mins

FARMERS MARKETS

LANCASTER CHARTER MARKET

Wednesday and Thursday 9am - 4pm
High Street, Lancaster, Lancashire, LA1 1PL

GARSTANG MARKET

Thursdays 8:30am - 3:30pm
High Street, Garstang, Preston, Lancashire, PR3 1EA

MORECAMBE FESTIVAL MARKET

Tue, Thurs, Sat & Sun 9am - 5pm
Central Drive, Morecambe, Lancashire, LA4 4DW

KIRKBY LONSDALE CHARTER MARKET

Thursdays 8:30am - 3:30pm
Market Square, Kirkby Lonsdale LA6 2AH



COCKERHAM SALT MARSH LAMB

Bank End Farm, Hillam Lane. 01524 751 414

Watch the sheep graze the salty marshes right from your window. Our neighbours, The Lawson family have farmed here for over a 100 years. The subtle taste and texture of the meat derives from the diet of the lambs that graze the marshes. Far from tasting salty the meat is light and sweet.

PORT OF LANCASTER SMOKEHOUSE

Glasson Dock, Lancaster LA2 0DB, .7 miles, 12 mins, 01524 751493
Well known for its Morecambe Bay Potted Shrimps you'll not only find fish but a range of poultry and cheese selection.

DEWLAY CHEESE

Dewlay Cheesemakers, Garstang By-Pass Rd, Garstang, Preston PR3
OPR, 8.0 miles, 17 mins, 01995 602335
Jamie Oliver notably took a fancy to the very indulgent Garstang Blue and he wasn't wrong too. Dewlay has a huge selection of excellent cheeses

FARM YARD BREW & CO

Farm Yard Ales, Gulf Lane, Cockerham, Lancaster, LA2 0ER, 5.0 miles,
12 mins
A quirky brewery producing awesome beer. Go and enjoy their tap room or pick up some beer for a takeaway taster.

COCKERHAM GOATS

Cockerham Goats, Gulf Ln, Cockerham, Lancaster LA2 0ER, 10 mins
Cockerham Goats is one of the country's longest established pedigree meat goat herds, with various meat cuts for sale

LOCAL SERVICES



MEDICAL

Accident & Emergency:

Royal Lancaster Infirmary, Ashton Rd, Lancaster LA1 4RP, 01524 65944

Pharmacy:

Co-Op Pharmacy, Park Hill Road, 3 Park Hill Rd, Garstang, Preston PR3 1EF,
01995 603 333

Doctors surgery:

Rosebank Medical Practice, Ashton Rd, Lancaster LA1 4JS, 01524 842 284

DENTIST

Market Gate Dental Practice, 1-7 Marketgate, Lancaster LA1 1JF, 01524 32630

Garstang: Croston Villas Dental Centre, 1 High St, Garstang, Preston PR3 1EA, 01995
602464

POST OFFICE

Cockerham Village Hall, Monday afternoons, 1:30 - 3:30pm only
Glasson Village Hall, Bodie Hill, Glasson Dock, LA2 0DF, 0345 611 2970

THANK YOU



DEPARTURE CHECKLIST



We do a full-service clean between guests. You do not need to strip your beds, or wash the last set of dishes.

While you are not expected to do a thorough cleaning, please be reasonable. Rinse your dishes and cookware and place in the dishwasher. Do not leave filthy dishes or garbage strewn about. Clean up after major messes, spills and accidents or bring them to our attention. A good rule of thumb is that if your mother were to see the home upon your departure, she should not be embarrassed!

Put dishes in the dishwasher and run the wash

Complete the feedback survey and let us know how your stay was

Remove rubbish and recycling and put in the bins outside

Please complete a final check for all your personal belongings!

Please put bedding and used towels in the bathtubs

We understand that accidents happen. But we do ask that you please let us know when they do.

If you notice any appliances not working, please let us know so we can get this fixed

REVIEWS & FEEDBACK

When we travel, we never stay anywhere without first checking the reviews and we suspect you are the same way. Please help future travellers – and help us grow our business – by telling the world why you loved staying with us. Please leave a review at the website where you booked your stay. In addition, we welcome and encourage reviews at:

[Google](#)

[Trip Advisor](#)

[Our Facebook Page](#)

[Booking.com](#)  [airbnb](#)



FOLLOW | TAG | SHARE
ON SOCIAL



@pattysbarn

STAY IN TOUCH

LOOKING TO BOOK AGAIN?

Let us know the next time you need accommodations in Lancaster! You can always save money by booking direct at our website:

www.pattysbarn.co.uk

Of course, we also hope you will refer your friends and family to us.

JOIN OUR MAILING LIST

If you'd like to join the list and keep in touch, please let us know, or head to our website where you can subscribe at the bottom of the page. We promise never to spam you.





We hope to see you again soon!



farm@pattysbarn.co.uk

(+44) 07812025940

[@pattysbarn](https://www.instagram.com/pattysbarn)

www.pattysbarn.co.uk

